

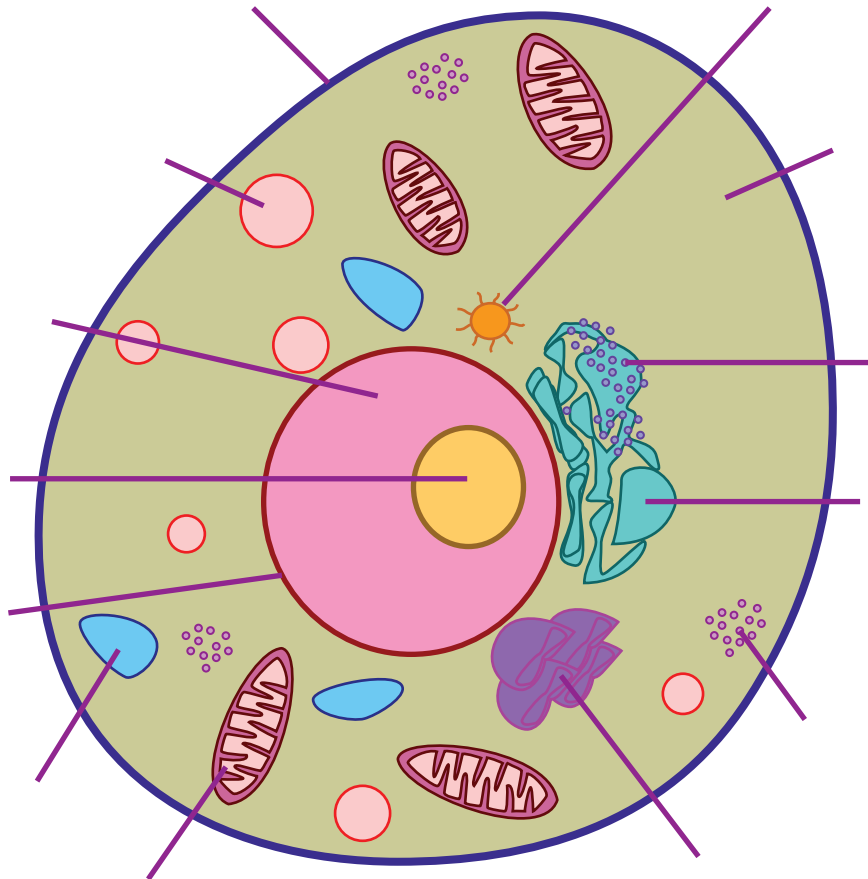


Plants and Animals Cells

Read the chart carefully.

	Animal Cell	Plant Cell
Cell wall	Absent	Present (formed of cellulose)
Shape	Round (irregular shape)	Rectangular (fixed shape)
Vacuole	One or more small vacuoles (much smaller than plant cells).	One, large central vacuole taking up 90% of cell volume.
Centrioles	Present in all animal cells	Only present in lower plant forms.
Chloroplast	Animal cells don't have chloroplasts	Plant cells have chloroplasts because they make their own food
Plastids	Absent	Present
Plasma Membrane	only cell membrane	cell wall and a cell membrane
Lysosomes	Lysosomes occur in cytoplasm.	Lysosomes usually not evident.
Cilia	Present	It is very rare

Next, label the diagram of an animal cell below.



Answer:

