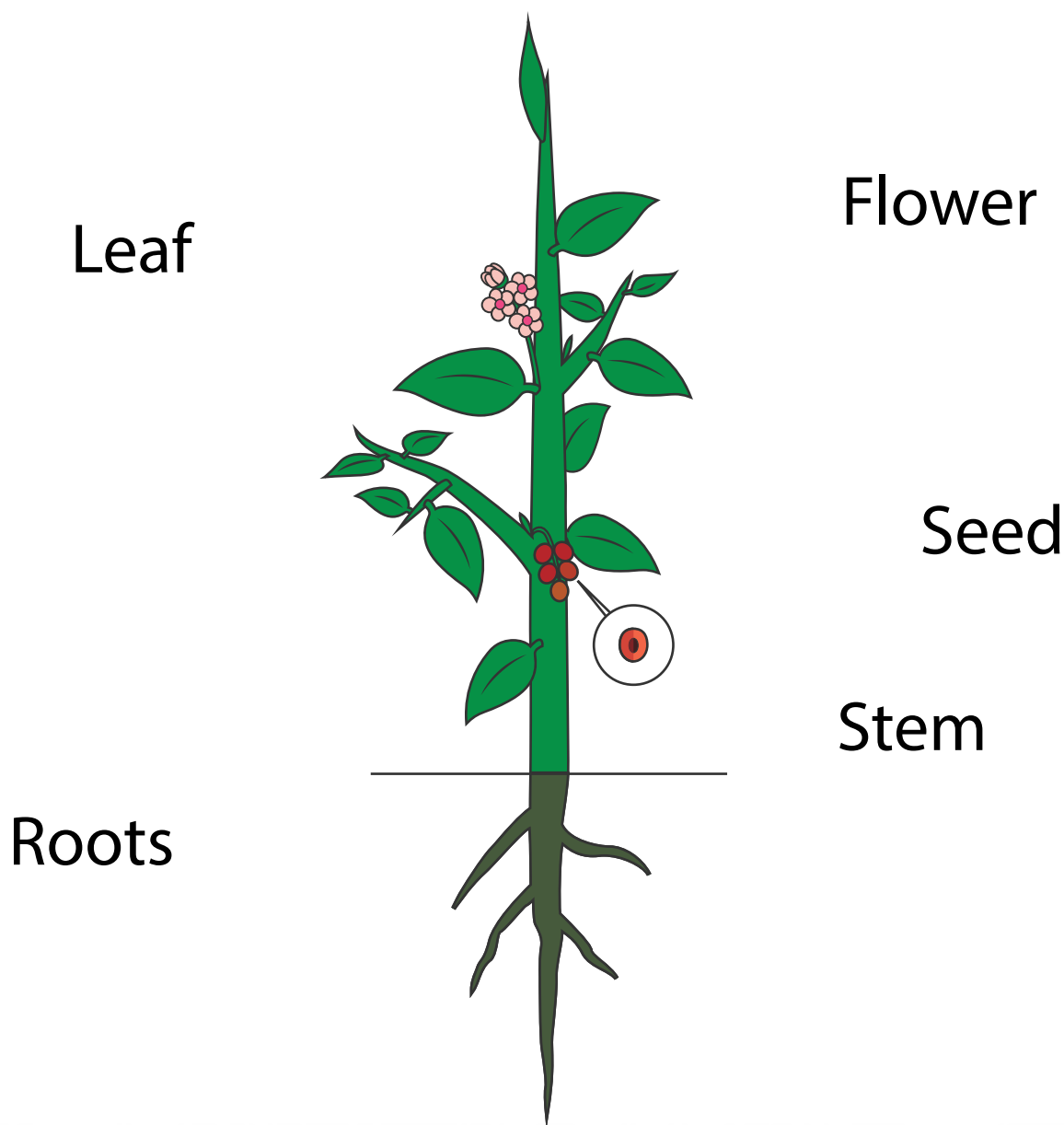


PARTS OF A PLANT

Plants are living things. The different parts of a plant help it grow, stay healthy and produce baby plants. Roots take in water from the soil. The trunk (or stem) and branches of a plant carry the water to the leaves. They also support the leaves of the plant. The leaves make food with the help of sunlight. Fruits protect the seeds and attract animals. The animals eat the fruits and leave the seeds in a different place, where a new plant begins to grow.

Match the plant parts to their names.



ANSWERS

